

IDEA-URBAN

TROYA

URBAN | BENCH

MATERIAL

impregnated wood autoclave treated wood
EN 71- 3 Safety for Toys



resistance



stabilized dimensions

translucent wood finish



transparency



protection

autoclave treated wood



strength



long serving

hot-dip galvanized & powder-coated metal



resistant to severe weather conditions

PACKING SIZE

COLOURS | TEXTURES

Wood



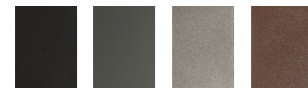
Creol

Chestnut

Light

Warm Grey

Metal



#01

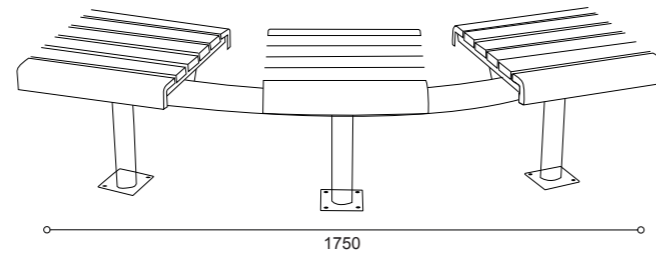
#02

#03

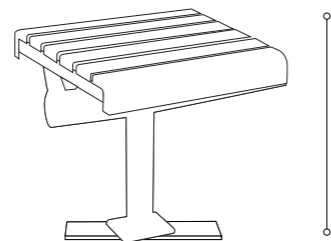
#04



DIMENSIONS



1750



585

420